



1964 CESSNA 210D
N375MK | MSN: 21058252



OVERVIEW

The 210D Centurion is a popular single-engine, retractable gear airplane from the legendary aeronautical engineers at Cessna. Introduced in 1960 as an evolution to the Cessna 182B, the 210D offered next level capacity and performance to the general aviation market.

The D-model is fitted with an upgraded 285hp Continental IO-520-A engine and delivers an increased max takeoff weight of 3,100lbs.

With seating for a pilot and five passengers, the 210D features a cargo door and the option to fold down the fifth passenger seat for additional aft cargo storage. 79 gallon fuel tanks provide a range of 640 nm while burning 15 gallons per hour.

N375MK has 6,200 total airframe hours and a Continental IO-520-A engine 980 hours since major overhaul. The engine also features Millennium Cylinders. The avionics are upgraded, including an all-new Garmin audio panel, a GNS 430W, and ADS-B certification.

N375MK just had the exterior paint freshened and interior renewed. Modern Centurion yokes, Rosen sun visors, and Status USB ports make this 210D a great aircraft.

1964 Cessna 210D
N375MK | MSN: 21058252



Brian Ridgley
(903) 586-1521
bar@ridgeaire.com

AIRFRAME

Total Time: 6,147 hours

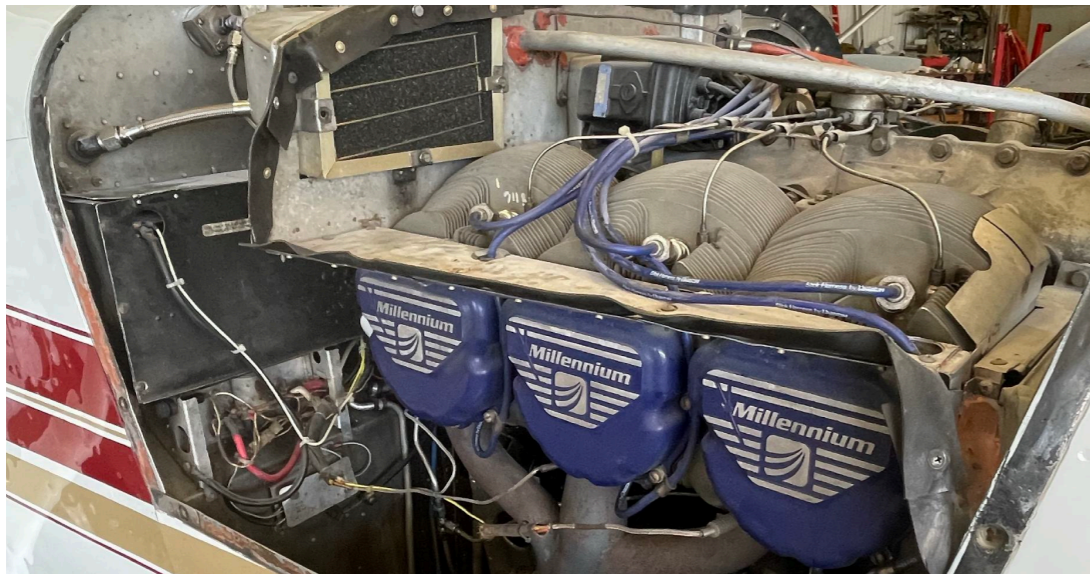
Damage History: Gear up landing (2004), pilot induced gear up landing (2022)

Useful Load: 1,110 lbs.

Empty Weight: 1,989 lbs.

OWNERSHIP

Texas, USA: 1963 - 2024 (Multiple Owners)



ENGINE

Continental IO-520-A

285hp | 1,700 hours TBO

S/N: 112656-R

SMOH: 0 hours (09/2023) by Jewell Aviation, Inc.

PROP

Hartzell 3-Bladed Prop HC-C3YF-1RF/F8068

SNEW: 0 hours (05/2023)

1964 Cessna 210D
N375MK | MSN: 21058252



Brian Ridgley
(903) 586-1521
bar@ridgeaire.com

MAINTENANCE

Annual Inspection

Last completed: May 2022

IFR Certification

Last completed: May 2022

Landing Gear Saddle Airworthiness Directive

AD 76-14-07

Not applicable



1964 Cessna 210D
N375MK | MSN: 21058252



Brian Ridgley
(903) 586-1521
bar@ridgeaire.com

AVIONICS

Avionics Master Switch

Audio Panel: PS Engineering w/ Intercom

NAV/COM/GPS 1: Garmin GNS 430W

NAV/COM/GPS 2: Garmin GNC 255

Transponder 1: Stratus ESG w/ WAAS GPS & ADS-B Out w/ remote plug

Transponder 2: Garmin 345

Autopilot: S-Tec System 50

EFI DG/HSI: Dual Garmin G5

ELT: Artex 406

Engine Monitor: 6x6 CHT/EGT Scanner



1964 Cessna 210D
N375MK | MSN: 21058252



Brian Ridgley
(903) 586-1521
bar@ridgeaire.com

ADDITIONAL EQUIPMENT

Stratus USB ports

Electro-luminescent lighting

Articulating pilot & copilot seats

Map light

Instrument warning light

Latest modern Centurion yokes

Rosen sun visors

Jump seat and small door in aft area that folds for maximum luggage space

Tail beacon

COMMENTS

Interior

Rated 9, completed 06/2022

- New PS Engineering audio panel
- Completed seats in tan leather with coordinating leather side panels

Exterior

Refreshed in 2022

- Primary color: Matterhorn White
- Accent stripes: Sport Red and Vegas Gold

******Aircraft was involved in a gear up landing July 2022. New 3-bladed prop installed, engine overhauled. All new interior finished just before incident.******

Aircraft specifications are subject to change at any time. This specification sheet is intended as preliminary information and is subject to verification by the purchaser

**1964 Cessna 210D
N375MK | MSN: 21058252**



**Brian Ridgley
(903) 586-1521
bar@ridgeaire.com**



1964 Cessna 210D
N375MK | MSN: 21058252



Brian Ridgley
(903) 586-1521
bar@ridgeaire.com



1964 Cessna 210D
N375MK | MSN: 21058252



Brian Ridgley
(903) 586-1521
bar@ridgeaire.com



1964 Cessna 210D
N375MK | MSN: 21058252



Brian Ridgley
(903) 586-1521
bar@ridgeaire.com



1964 Cessna 210D
N375MK | MSN: 21058252



Brian Ridgley
(903) 586-1521
bar@ridgeaire.com



1964 Cessna 210D
N375MK | MSN: 21058252



Brian Ridgley
(903) 586-1521
bar@ridgeaire.com



1964 Cessna 210D
N375MK | MSN: 21058252



Brian Ridgley
(903) 586-1521
bar@ridgeaire.com



1964 Cessna 210D
N375MK | MSN: 21058252



Brian Ridgley
(903) 586-1521
bar@ridgeaire.com



1964 Cessna 210D
N375MK | MSN: 21058252



Brian Ridgley
(903) 586-1521
bar@ridgeaire.com



1964 Cessna 210D
N375MK | MSN: 21058252



Brian Ridgley
(903) 586-1521
bar@ridgeaire.com



RidgeAire
WORLDWIDE
aviation specialists



Brian Ridgley
President/CEO



JP Hendrix
Sales Manager



Zach Ridgley
Researcher



Jan Crawford
Controller



Chet Collins
Chief of Staff